

L=44.52'  
R=150.85'  
Lc=S 66°55'25" E  
44.36'

16.92'  
212.50'  
=S 52°08'41" E  
46.82'

Reserved for  
Future Development

0.85 Acres

11  
15941.6  
0.37

114  
27315.08 Sq. Ft.  
0.63 Acres

115  
23438.64 Sq. Ft.  
0.54 Acres

116  
13490.16 Sq. Ft.  
0.31 Acres

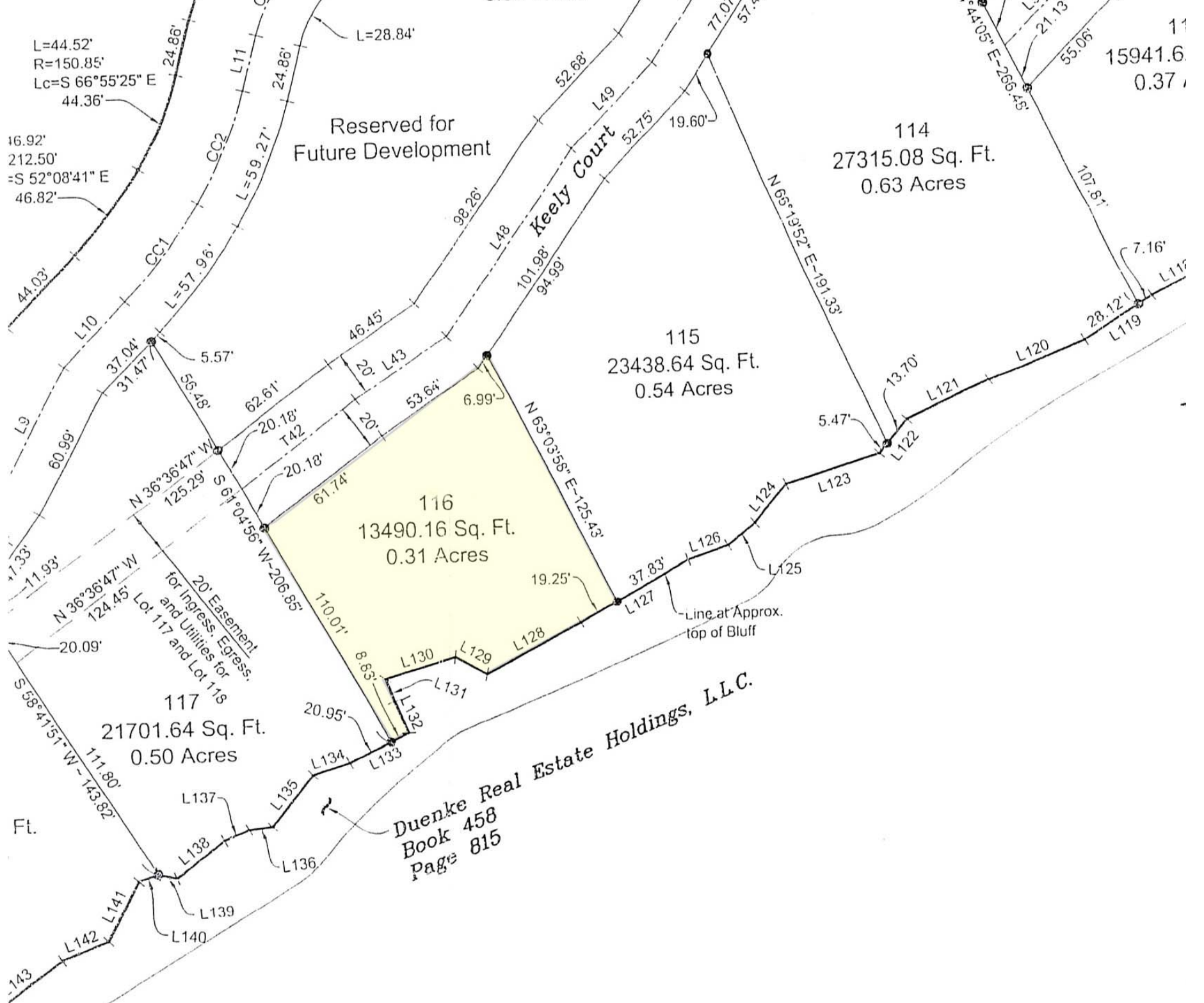
117  
21701.64 Sq. Ft.  
0.50 Acres

Duenke Real Estate Holdings, L.L.C.  
Book 458  
Page 815

20' Easement  
for Ingress, Egress,  
and Utilities for  
Lot 117 and Lot 118

Line at Approx.  
top of Bluff

Keely Court



L=44.52'  
R=150.85'  
Lc=S 66°55'25" E  
44.36'

16.92'  
212.50'  
=S 52°08'41" E  
46.82'

Reserved for  
Future Development

0.85 Acres

11  
15941.6  
0.37

114  
27315.08 Sq. Ft.  
0.63 Acres

115  
23438.64 Sq. Ft.  
0.54 Acres

116  
13490.16 Sq. Ft.  
0.31 Acres

117  
21701.64 Sq. Ft.  
0.50 Acres

Duenke Real Estate Holdings, L.L.C.  
Book 458  
Page 815

20' Easement  
for Ingress, Egress,  
and Utilities for  
Lot 117 and Lot 118

Line at Approx.  
top of Bluff

Keely Court